

www.StratisIndustries.com
custcare@stratisindustries.com
321 East 1st. St.
Centuria, WI 54824
800.969.9708

Standard Keyboard Trays

The Standard keyboard trays have been the mainstay of the Sunway line for many years. The rectangular shape provides a consistent look in straight line desk designs. Available in two tray only versions and two keyboard tray / mouse tray combinations, the Standard trays will fit most any workspace application.

- Height Adjustment
- Tilt Adjustment
- 360° Rotation
- A Comfortable, Hygienic Wrist Rest
- A Stylish and Durable 1/4" Thick Composite Phenolic Laminate Keyboard Tray



TS820CH

- Overall Tray Dimensions: 20"w x 10"d
- A Full Bullnose Edge for a Soft Look and Durable Feel
- A 19"w x 2"d Foam Wrist Pad Covered in a Soft Vinyl Material is Standard. Gel Wrist Pad in Leatherette Vinyl is Optional (*specify gel pad when ordering, for this option*)
- Charcoal Phenolic (black with gray specks) – CH
- Some Assembly Required; Mounting Hardware Included



TS840CH

- Overall Tray Dimensions: 20"w x 10"d (*with mouse tray fully retracted under keyboard tray*)
- A Full Bullnose Edge for a Soft Look and Durable Feel
- A 19"w x 2"d Foam Wrist Pad Covered in a Soft Vinyl Material is Standard. Gel Wrist Pad in Leatherette Vinyl is Optional (*specify gel pad when ordering, for this option*)
- 9" Diameter Swivel Mouse Tray can be Attached to Either Front Keyboard Corner (*standard on the right side; specify left side when ordering*)
- Swivel Mouse Tray Comes Complete with Mouse Pad and Edge Guard Material
- Charcoal Phenolic (black with gray specks) – CH
- Some Assembly Required; Mounting Hardware Included

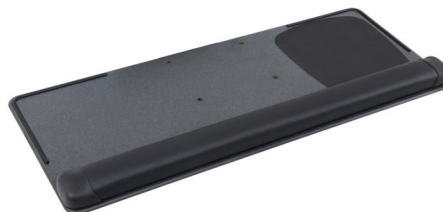
TS408BK

- Overall Tray Dimensions: 20"w x 10"d (*with mouse tray fully retracted under keyboard tray*)
- A Full Bullnose Edge for a Soft Look and Durable Feel
- A 19"w x 2"d Foam Wrist Pad Covered in a Soft Vinyl Material is Standard. Gel Wrist Pad in Leatherette Vinyl is Optional (*specify gel pad when ordering, for this option*)
- Slide-Out Mouse Tray Extends up to 6.75" to Either Side From Attachment Underneath the Keyboard Tray
- A Front Facing, Molded Handle Allows Operator Easy Left to Right Mouse Tray Movement
- Edge Guard Material Along Back Side of Mouse Tray
- An Excellent Option for Multiple User Environments
- **NEW & IMPROVED:** Keyboard Tray Now Made with 100% Recycled Black High-Density Polyethylene -- BK
- Mousing Surface is Black Phenolic
- Some Assembly Required; Mounting Hardware Included



TS825CH

- Overall Tray Dimensions: 25"w x 10"d
- When Space Permits, an Excellent Way to Have Both the Keyboard and Mouse on the Same Tray Surface
- A 24.5"w x 2"d Foam Wrist Pad Covered in a Soft Vinyl Material is Standard. Gel Wrist Pad in Leatherette Vinyl is Optional (*specify gel pad when ordering, for this option*)
- Mouse Pad Included; Edge Guard Material Protects Either Corner of Tray
- Charcoal Phenolic (black with gray specks) – CH
- Some Assembly Required; Mounting Hardware Included



Complete System Options

(Refer to Keyboard Arms Sheet for Additional Information on Arm Mechanisms)



CMLZ840CH

ARMCML-Z with TS840CH tray



STKS840CH

ARMTKS-S with TS840CH trayA



CMLZ408BK

ARMCML-Z with TS408BK tray



STKS408BK

ARMTKS-S with TS408BK tray



CMLZ825CH

ARMCML-Z with TS825CH tray



STKS825CH

ARMTKS-S with TS825CH tray



Made in the USA

Apr 2016